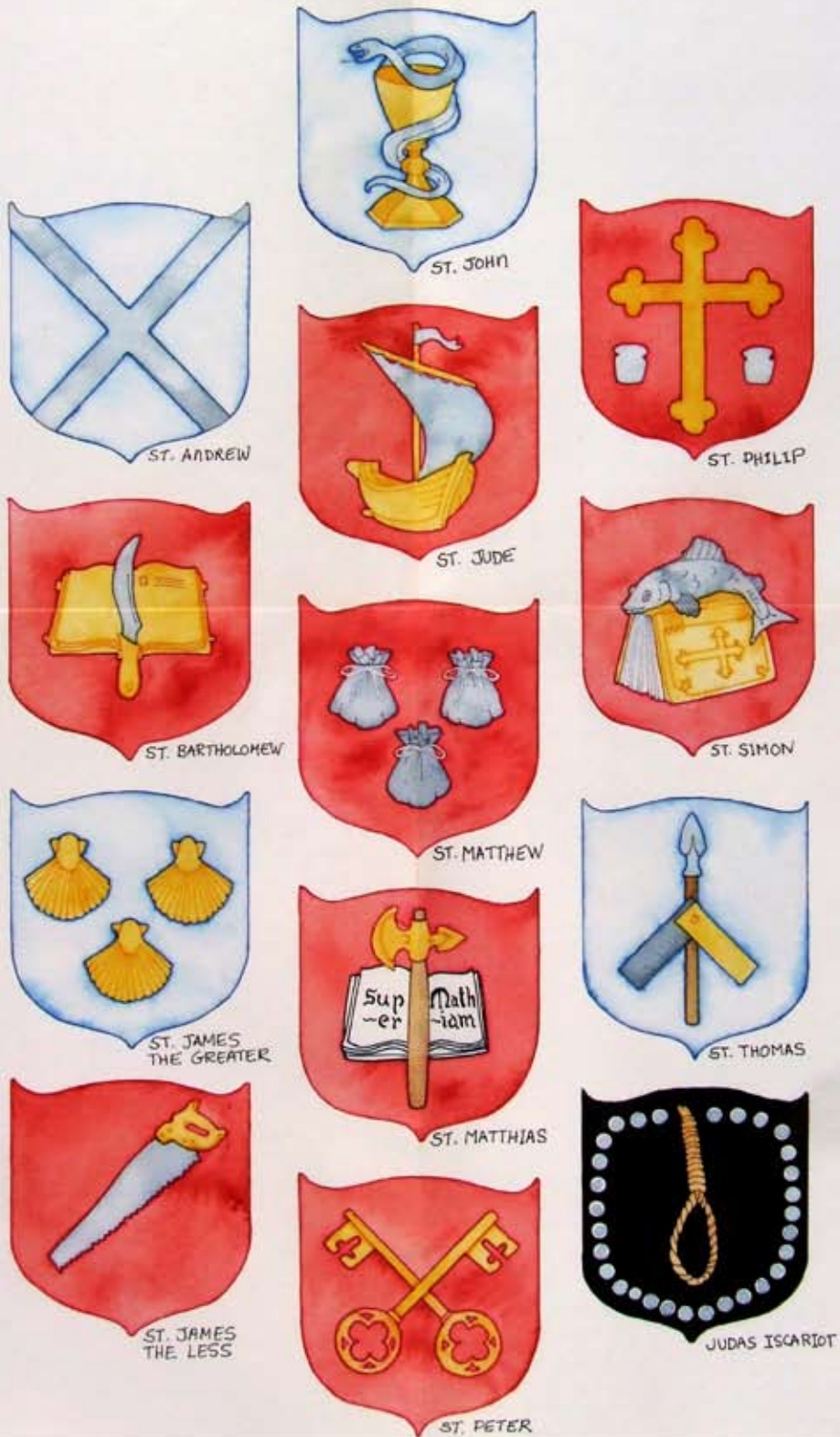
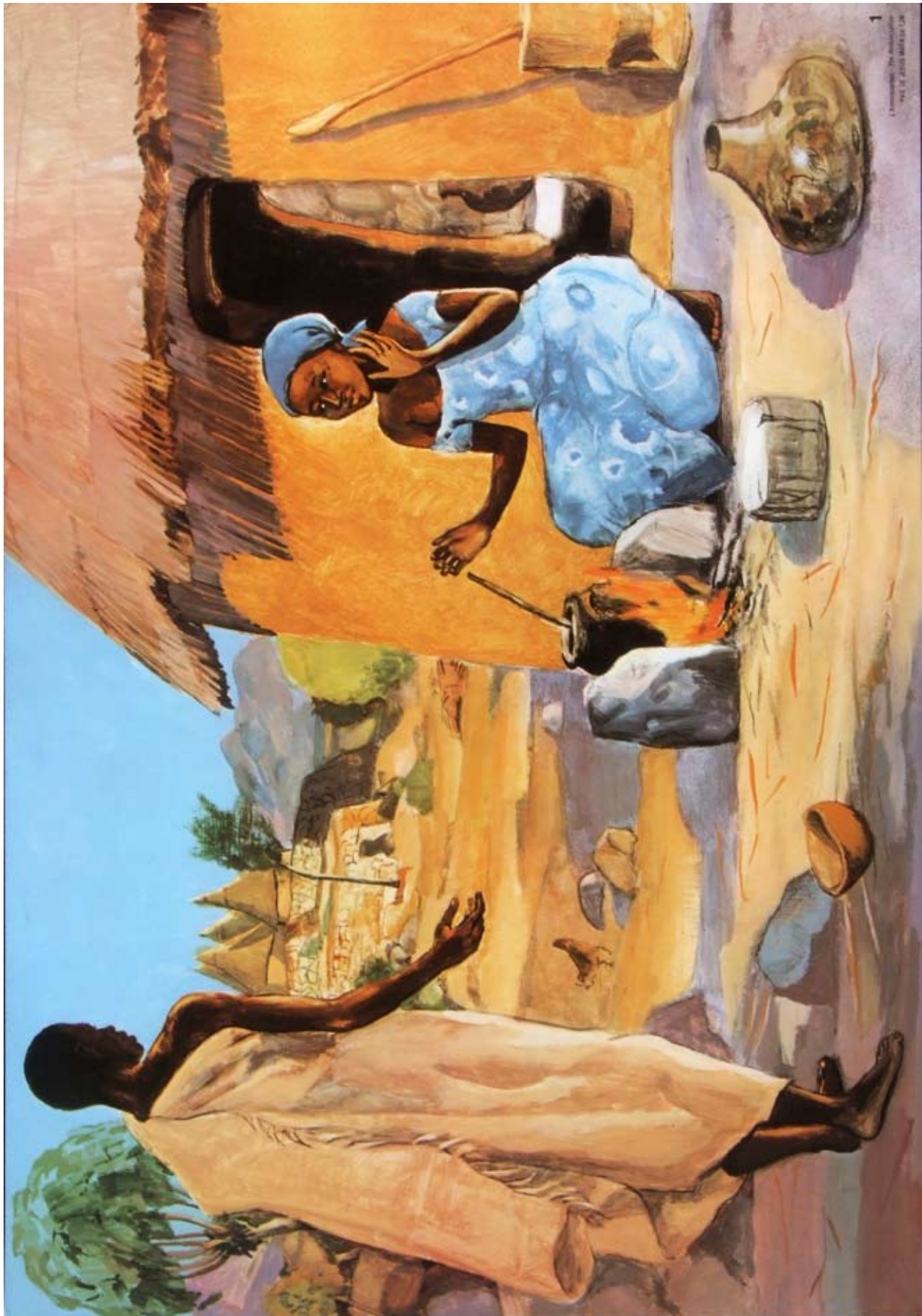


Shields of the Apostles

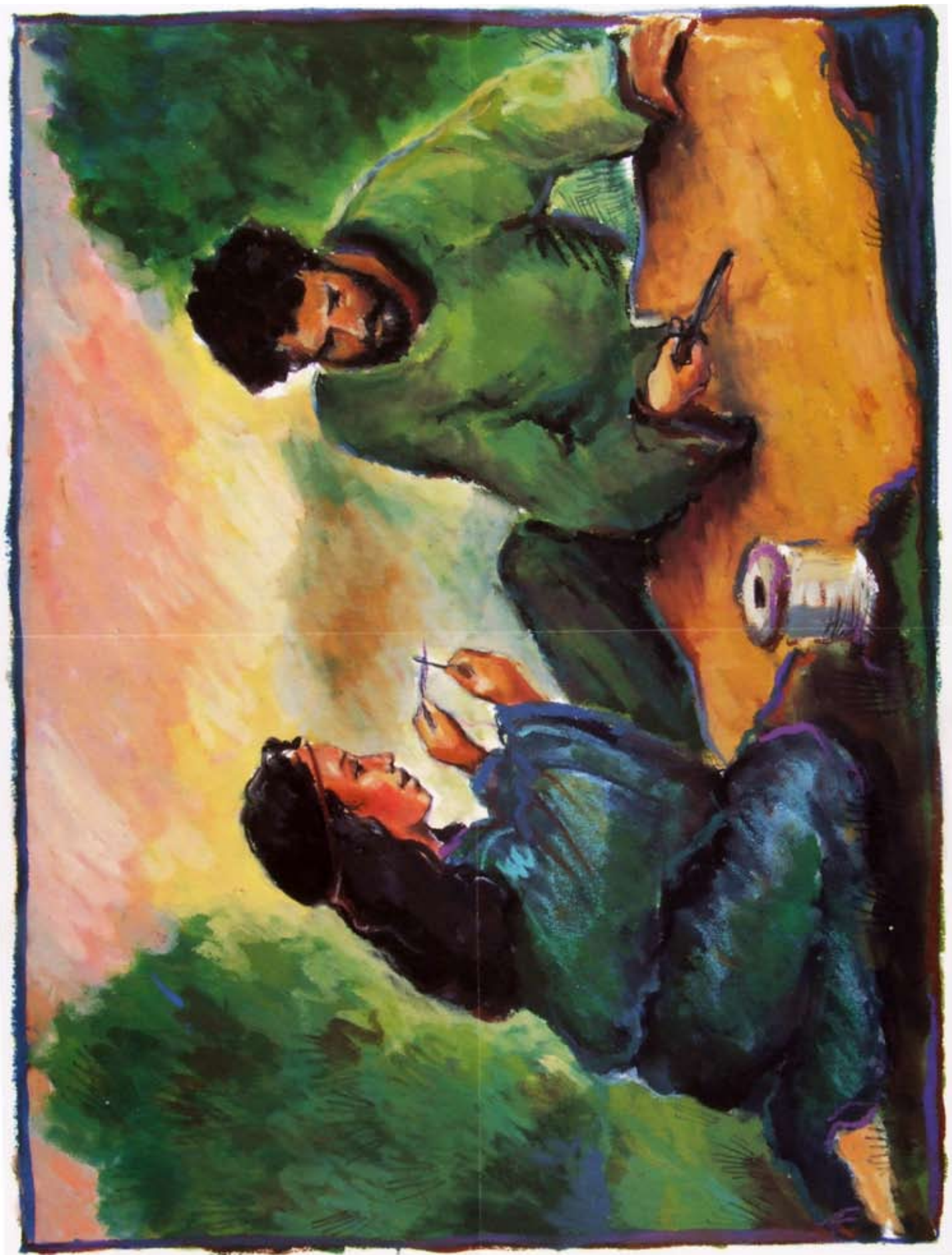




New Covenant Disciples Poster #1 Shields of the Apostles
 Session 5 Bobbi Tull



New Covenant Disciples **Poster #3 The Annunciation** Sessions 1, 2 Life of Jesus Mafa
All rights reserved. Vie de Jesus Mafa, 24 rue du Marechal Joffre F-78000 Versailles. Used by permission.



New Covenant Disciples **Poster #4 The Tentmakers**

Sessions 5, 7

Elizabeth Wolf



New Covenant Disciples **Poster #5 Jesus Teaching**
Virginia Theological Seminary Chapel

Sessions 4, 8, 9

Photo by Mark Borchelt

Conflict Styles

How do you handle conflict? Select the animal that best describes your conflict style.



The Turtle:

- Avoids Conflict
- Withdraws into their shells
- Believes conflict resolution hopeless
- Avoids people and issues involved in conflict
- Feels helpless



The Shark:

- Tries to overpower opponents
- Doesn't care if others like them
- Wants to be the winner
- Seeks to achieve own goals at all costs
- One person a winner, one a loser
- Losing makes them feel weak



The Owl:

- Highly values goals and relationships
- Seeks solutions through discussion
- Not satisfied until goals of both are met
- Conflicts are problems to be solved
- Wants tensions and negative feelings resolved



The Teddy Bear:

- Feels relationship most important
- Wants harmony
- Will smooth things over to keep relationship
- Wants to be liked by others
- Conflict cannot be discussed



The Fox:

- Always seeks compromise
- Looks for middle ground
- Willing to sacrifice to find agreement
- Seeks solution where both will gain
- Looks for common good

I messages: "You made me feel _____ when you insisted on _____."
"I feel _____ when you insist on _____."

Turn statements around; instead of making accusations, make observations. What are other "I" messages you could say to avoid conflict?

Adapted from *Joining Together: Group Theory and Group Skits*, David W. Johnson and Frank R. Johnson. Allyn and Bacon, 1991: 307-9.

Characteristics of Disciples

Matching Game

Religious people, even those Christ called to spread his mission in the world, were human like us. If God used imperfect people like the twelve disciples, God can use us. Match the numbered descriptions on the left with the scripture citation on the right by drawing a line between the correct answers.

- | | |
|---|------------------|
| 1. Laypeople called to be fishers of believers | A. Matthew 10:7 |
| 2. Tax collectors considered dishonest | B. Mark 10:35-37 |
| 3. Called to heal | C. Luke 22:31-34 |
| 4. Two who sought favoritism | D. John 20:24-25 |
| 5. One who belonged to an extreme group; a Zealot | E. Mark 1:16-20 |
| 6. Called to preach | F. Luke 6:15 |
| 7. One who doubted | G. Matthew 10:1 |
| 8. Betrayal of Jesus | H. Mark 2:13-17 |

Answers: 1-E; 2-H; 3-G; 4-B; 5-F; 6-A; 7-D; 8-C

The Twelve Apostles (Plus One)

Andrew – The patron of Russia and Scotland, he was a Galilean fisherman, the brother of Simon Peter, and sometimes in Jesus' inner circle. Apparently an earlier disciple of John the Baptist during his Jordan River ministry, Andrew introduced his brother to Jesus. Andrew found the boy with the loaves and fishes for feeding the 5,000. Tradition says Andrew was a missionary who was crucified in Achaia on an "X" shaped cross, or "St. Andrew's" cross, his symbol.

Bartholomew, also known as Nathaniel, was introduced to Jesus by Philip. He was a resident of Cana, a rival, neighboring town of Nazareth. Legend tells that Armenia and India were the areas of his missionary work. He is said to have been skinned alive by a Phrygian ruler. His symbol is the three flaying knives.

James, Son of Zebedee – A Galilean fisherman, and brother to John, he and his brother were nicknamed "the sons of thunder" by Jesus. He was the first apostle to die for his Christian faith at Herod's order, the only biblically verified death of an apostle, except for Judas. Legend mentions his missionary travels to Spain, thus he is the patron of Spain and of pilgrims. Scallop shells are his symbol.

James, Son of Alphaeus – Present in the upper room at Pentecost, he is linked to Thaddeus who may have been his brother. Legend designates him as bishop of the church in Jerusalem. Tradition says that James was cast down from a pinnacle of the Jerusalem temple, stoned and sawn asunder by the Jews. A saw is his symbol.

John – Another Galilean fisherman, brother to James, he was one of the inner circle and was with Jesus during Gethsemane. John was possibly the "Beloved Apostle" referred to in John, and spoken of by Jesus as he died at Calvary. Legend tells of two stories to explain his symbol of a chalice with a serpent. One is an attempted assassination by drinking poisoned wine from a chalice in Ephesus. Another suggests that it symbolizes Jesus prior to his arrest and crucifixion.

Jude (or Thaddaeus) – He is perhaps the writer of the Letter to Jude. Legend says he traveled by boat to many ports as a missionary. The sailing vessel represents his journeys.

Matthew (or Levi) – Scribes criticized Jesus for associating with Matthew, a tax collector. By tradition, he is

said to be the author of the first gospel. Legend records him as a Christian martyr by crucifixion or beheading. The three money bags refer to his occupation before he was a disciple.

Matthias – Chosen by lot to replace Judas Iscariot, he served as a missionary in Judea, where he is said to have been stoned and beheaded. His symbol is a battle axe with an open book with the inscription *super Mathiam*.

Philip – An early disciple of John the Baptist, a resident of Bethsaida, he was often linked with Andrew. He brought Greeks to meet Jesus during the final Passover and introduced Bartholomew to him. Tradition says he died by crucifixion, hence roundels representing the five loaves of bread around the cross.

Simon Peter – A Galilean fisherman, Jesus gave him the name Peter, meaning "rock." He was the first apostle to identify Jesus as Messiah. He defended Jesus at the time of his arrest, only to later deny him. After Pentecost, he assumed strong leadership in the Church, preaching and healing in Jesus' name. Tradition says he was the first bishop of the Roman church. Legend says he felt unworthy to die as Christ had; he requested that his cross be inverted so that he might look heavenward as he was crucified. His symbol combines the inverted cross and the "keys to the Kingdom."

Simon the Zealot – A member of the Zealot party who wanted to see the Roman Empire overthrown, he was probably from Galilee, and linked by Luke to Jude. Legend says the two preached and died in Persia. Simon's symbol is a fish lying on a book, suggesting he was a fisher of people.

Thomas – He often asked Jesus questions and had to see Jesus' wounds before he could believe the resurrection. Legend says he was a missionary to east India where he is said to have built a church with his own hands, making him the patron saint of builders. The spear refers to the instrument of his martyrdom, while the carpenter's square is his vocational symbol.

Judas Iscariot – The traitorous apostle, he was present at the Last Supper, and may have been a Zealot. He betrayed Jesus with a kiss and received thirty pieces of silver for his part in the plot. Matthew says he committed suicide; Acts says he fell over and died. His symbol is the pieces of silver.

Gifts SQUARES

The goal for this game is to get as many names of people who can do the "gifts" in each square as possible.

Writes stories or poetry	Good at math	Plays an instrument	Likes to organize things
Likes to cook	Likes to build	A good listener	Likes to sing
Likes to spend time alone	Likes to organize people	Likes to walk in the garden	Likes to work with cars
Likes to act	Good at science	Can draw	Good at sports
Likes to sew	Likes to spend time with children	Likes to read	Other gifts: